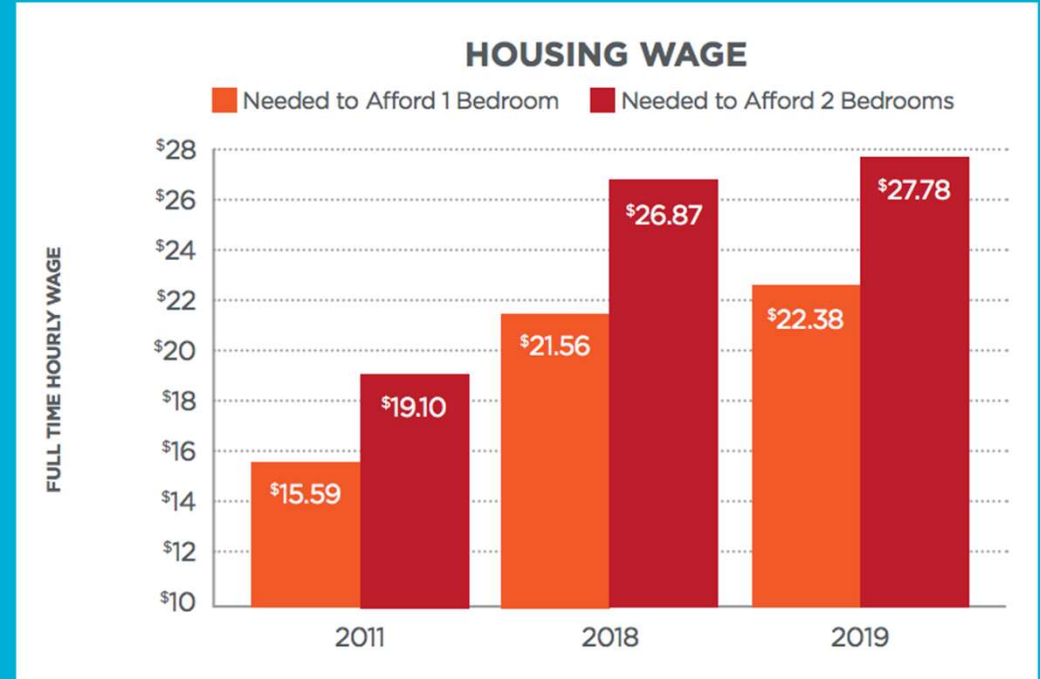




Habitat
for Humanity[®]
of Snohomish County

ABC of Western Washington | Construction Business School

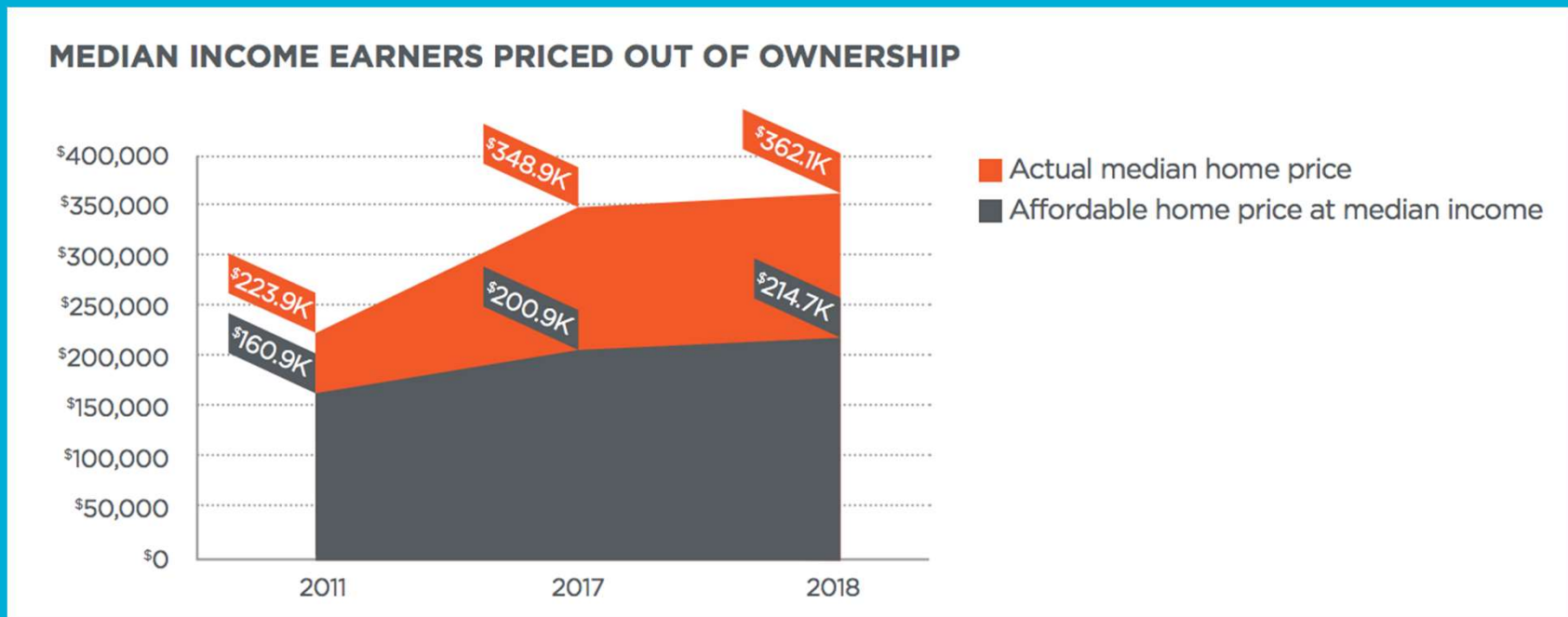
Rent is pricey.



Snohomish County home
prices have increased

33%
since 2015.

Homeownership is out of reach.



30% of
Snohomish County
renters are
cost-burdened.

70% of those families spend half
of their income or more on rent.

Our Mission

Seeking to put God's love into action, Habitat for Humanity of Snohomish County **brings people together to build homes, community and hope.** We envision a world where everyone has a decent and affordable place to live.

Homeownership Program

- Goal: Eliminate poverty and substandard housing.
- Provides upward mobility, family stability and strength for low-income families.



Homeownership Program

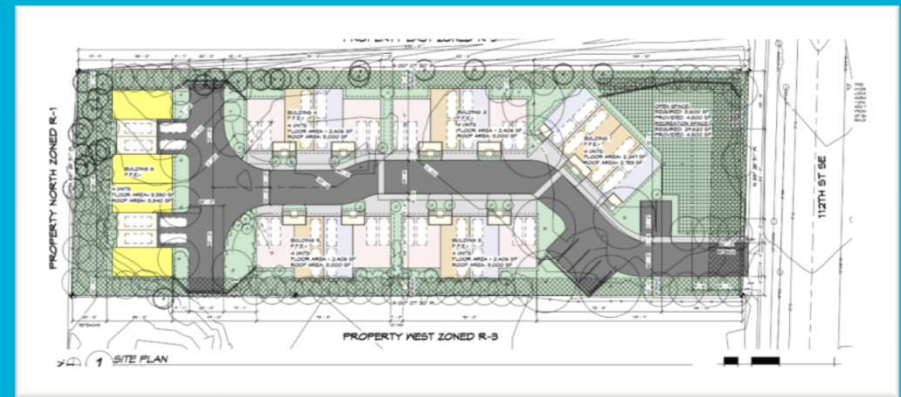


- Appraisal: ~ \$300k
- Cost to build: \$125k
 - (Land donated)
- **Sold to family: \$125k**
- Average costs for single-family homes: \$140k - \$180k
- Silent second mortgage for remainder, % forgiven after 5 years through term.

Habitat's "Secret Sauce"

1. Land

- Out of 26 single-family homes or duplex units built:
 - 17 in Everett
 - 6 in Marysville
 - 2 in Gold Bar
 - 1 in Lynnwood
- Land found by Construction and Real Estate Committees, voted and approved by Board.
- Will often build on donated land.



2. A Habitat Partner Family



- 1) Need (space/family size, home condition, location)
- 2) Income (30% - 80% AMI)
[\$24,825 - \$66,200 (\$49,605)]
- 3) Finances (credit score 620)
- 4) Partnership (**500 hours**)
- 5) Residency (1 year)

3. Volunteers

- Latest single-family home had **5,000 donated construction hours** from **199 volunteers** and took **44 weeks**.
- 80% of those hours were donated by just 20 people – our “Builder’s Club.”
- 75% of labor/services overall are donated.



4. Materials



- We regularly received **20-25% of our materials donated for each build.**
- Can repurpose some donations to our secondhand retail stores for builds.
- Large corporations have agreements with Habitat International that provide us materials locally (Whirlpool, Valspar, GAF).

5. Financing

Funding for builds provided by:

- Individual donors
- Corporate donations/employer match
- Large grants (\$10,000 - \$500,000)
- Corporate sponsorships (\$1,000 - \$50,000)
- Occasional loans (to secure land)
- Profits from retail store sales

Gold Bar Sponsors



AMVETS Post 2018 | Combat Veterans International Chapter 6
National Mortgage Insurance | Snohomish United Methodist Church
St. Alban's Episcopal Church

Gold Bar Gift-In-Kind Donors

Emerald City Cabinets - Kitchen and Bath Cabinets
Finish Trades Institute Northwest - Drywall Finishing
Grace Construction Products - House Wrap
Hampton Lumber - Framing Lumber
Judd & Black Appliances - Appliances
L&W Supply - Drywall
Owens Corning - Roofing Materials
Ward Roofing LLC - Roofing Installation
Weller Engineering - Structural Engineering Plan

The Huff-Redding Family Home Dedication



**15708 Goldbar Drive
Gold Bar, WA 98251**

This is what the Lord Almighty, the God of Israel, says to all those I carried into exile from Jerusalem to Babylon: "Build houses and settle down; plant gardens and eat what they produce. Marry and have sons and daughters; find wives for your sons and give your daughters in marriage, so that they too may have sons and daughters. Increase in number there; do not decrease. Also, seek the peace and prosperity of the city to which I have carried you into exile. Pray to the Lord for it, because if it prospers, you too will prosper." (Jeremiah 29: 4-7)



Next up: Twin Creeks Village



- 24 multifamily units - 6 fourplexes at 925 112th St in Everett.
- Breaking ground March 2021. Civil construction aim to finish summer/fall of 2021.
- Construction of 1 fourplex at a time through 2024-2025.
- **Need to raise \$3.34 million over the next 4-5 years. (\$1.1 million secured)**

How can you help?

Corporate Partnerships

- Donate services/labor/materials directly to a build. (**Currently seeking civil engineering firms for Twin Creeks Village.**)
- Build or Event Sponsorships (Annual fundraiser on October 16th, 2020).
- Set up employee giving and/or employer match program.



Corporate Partnerships Cont'd.



- Schedule a Volunteer Build Day (\$1,000 sponsorship required for corporate groups).
- Donate construction supplies to stores (Lynnwood, Everett and Smokey Point and jobsite pickup).
- Donate land zoned for residential use.

Contact:

Aaron Olsen

Resource Development Coordinator

425-405-7767

aolsen@habitatsnohomish.org



Habitat
for Humanity[®]
of Snohomish County

