

HENSEL PHELPS

**ABC Business School Presentation
Thursday, April 29, 2021**

OWNERSHIP
INTEGRITY
BUILDER
DIVERSITY
COMMUNITY
OUR VALUES

OWNERSHIP
INTEGRITY
BUILDER
DIVERSITY
COMMUNITY
OUR VALUES

PRECONSTRUCTION CONTACTS



Scott Bills
Director of Operations
sbills@henselphelps.com



Brad Rundquist
Chief Estimator
brundquist@henselphelps.com



Dave Hutt
Operations Manager
dhutt@henselphelps.com



Ryan Piper
Operations Manager
rcpiper@henselphelps.com



Henry Yates
Small Business Liaison



Rod Noble
Senior Estimator
rnoble@henselphelps.com



Jacob Erbes
Senior Estimator
jerbes@henselphelps.com



Dave Tompkins
Senior Estimator
dtompkins@henselphelps.com



Dana Napper
Lead Estimator
dnapper@henselphelps.com

Office: 425.646.2660 | 15375 SE 30th Place, Suite 110, Bellevue, WA 98007

OWNERSHIP
INTEGRITY
BUILDER
DIVERSITY
COMMUNITY
OUR VALUES

HENSEL PHELPS LOCATIONS





NATIONAL SMALL BUSINESS PROGRAM



- De-bundle subcontracting opportunities
- Assist in understanding the project
- Encourage JV's, partnerships/teaming
- Assistance to small business enterprises
 - Assist in obtaining bonds & insurance
 - Mentor/coach – office and field
- Meet our goals – Good Faith is Not Good Enough
- Open and honest communication!

<https://www.henselphelps.com/hensel-phelps-awarded-2020-abc-national-diversity-excellence-award/>

SURETY BOND ASSISTANCE PROGRAM



Program Goal:

To increase participation of qualified small businesses on Hensel Phelps construction projects.

Results:

- 92% of first-time applicants received bond approvals
- 100% of SBA Surety Bond Guarantee Program applicants received bond approvals
- Over \$60 million in subcontracts bonded

Managing Agent: The Barbour Group, LLC
Karen Barbour, President
(kbarbour@thebarbourgroup.com)

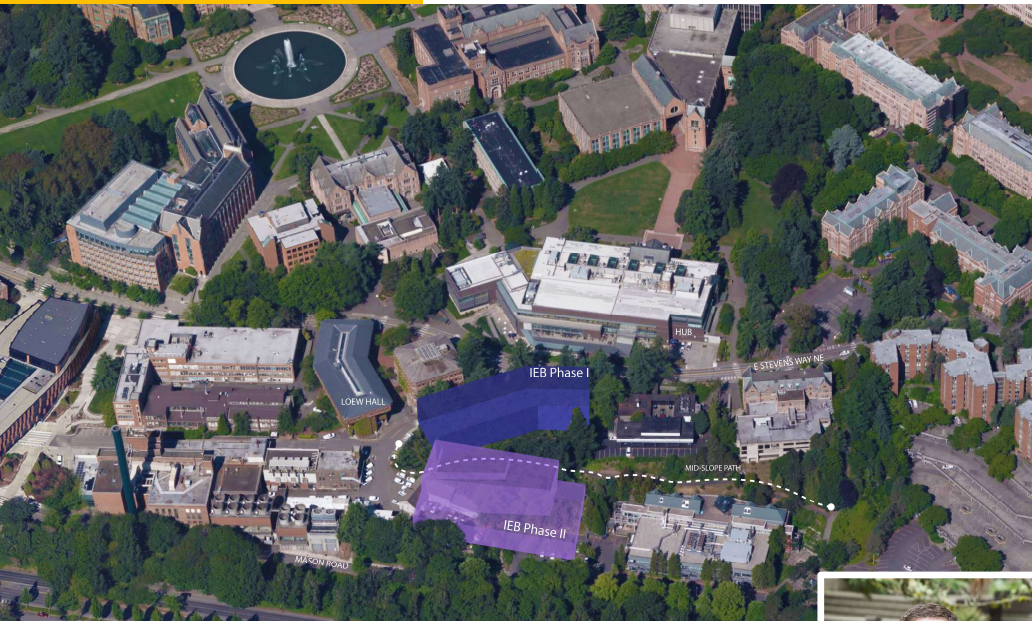
<https://www.henselphelps.com/hensel-phelps-and-the-barbour-group/>



PROJECTS IN PRECONSTRUCTION

- UW – Interdisciplinary Engineering Building
- GSA – Pac Highway Land Port of Entry - Building Envelope Restoration
- Delta Airlines - SEA Concourse A Sky Club
- Tacoma Public Schools - Fawcett Elementary School
- Sound Transit – Downtown Redmond Link Expansion
- Hensel Phelps Critical Care Group

INTERDISCIPLINARY ENGINEERING BUILDING



Ryan Piper
Operations Manager
rcpiper@henselphelps.com



Brad Rundquist
Chief Estimator
brundquist@henselphelps.com

INTERDISCIPLINARY ENGINEERING BUILDING

- Seattle, Washington
- \$52.8M | 75,000 SF | Progressive Design-Build
- Five-floor interdisciplinary teaching and lab facility (wet and dry labs).
- UW Business Equity and Inclusion Voluntary Goals
 - Business Equity Enterprises – 22%
 - Minority & Woman Owned Business – 16%
- Preconstruction/Purchasing
 - Start: March 2021
 - Completion: February 2022
- Construction
 - Start: July 2021 (UW Tower Enabling) / Q1 2022 (IEB)
 - Completion: April 2024

Slide 8

HL1 Need to add in WMBE/SBE Goals for each project
Hutt, David L, 4/27/2021

RK1 ok. I think we have them listed already for DRLE
Rundquist, Katie, 4/27/2021

INTERDISCIPLINARY ENGINEERING BUILDING

- Purchasing
 - UW Tower Enabling Work – May 2021 to July 2021
 - TI buildout at the UW Tower as part of the make ready work.
- IEB Building – Q3 2021 to Q1 2022
 - Buyout for all scopes outside of the design-build scopes (Design services, MEP Design-Build Trade Partners, Exterior Skin Trade Partner)

LPOE BUILDING ENVELOPE RESTORATION



Dave Hutt
Operations Manager
dhutt@henselphelps.com



Brad Rundquist
Chief Estimator
brundquist@henselphelps.com



Dave Tompkins
Senior Estimator
dtompkins@henselphelps.com

LPOE BUILDING ENVELOPE RESTORATION

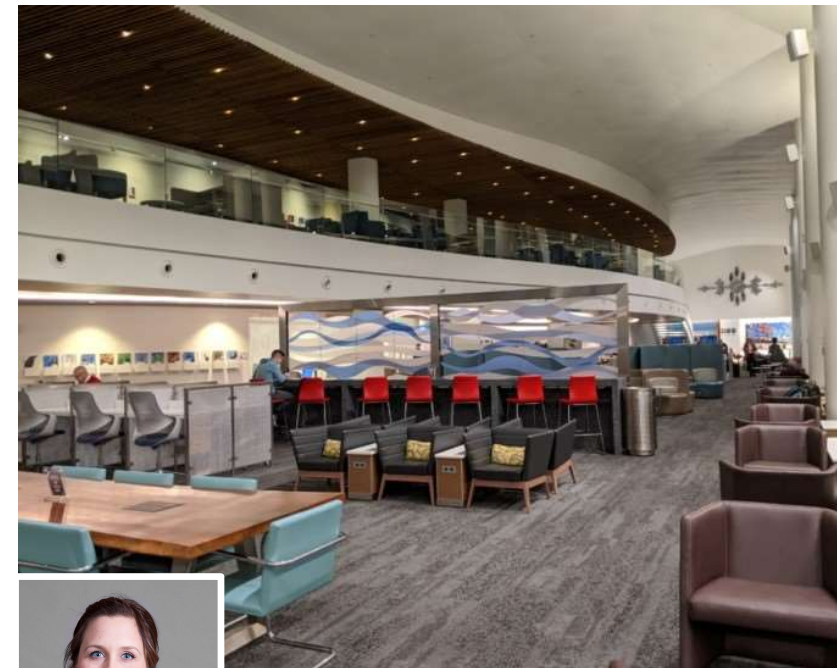
- Blaine, Washington
- \$18 M | Design-Build
- Exterior envelope and roofing restoration for three buildings at active 365/24/7 facility
- Federal small business requirements
 - Small Business - 69.55%
 - SDB – 15%
 - WOSB – 5%
 - HUBZone – 5%
 - SDVOSB – 5%
- Preconstruction
 - Start: March 2021
 - Completion: August 2021
- Construction
 - Start: July 2021
 - Completion: March 2023

DELTA CONCONOURSE A SKY CLUB



Delta Sky Clubs at
LAX and ATL

Dave Hutt
Operations Manager
dhutt@henselphelps.com



Dana Napper
Lead Estimator
dnapper@henselphelps.com

DELTA CONCOURSE A SKY CLUB

- SeaTac, Washington
- Value \$58M | 48,000 SF | CM-at-Risk
- 6 level structural core and shell including tenant improvements of the two-level lounge space. High-end finishes, millwork, restroom, shower facilities, full kitchen, freezers, storage, employee and office spaces.
- Equal Business Opportunity Goals
 - Small and Diverse Business – 10%
- Preconstruction/Purchasing
 - Start: 4/27/21
 - Completion: Spring '22
- Construction
 - Start: Fall/Winter' 21
 - Completion: May '23

FAWCETT ELEMENTARY SCHOOL



Dave Hutt
Operations Manager
dhutt@henselphelps.com



Dave Tompkins
Senior Estimator
dtompkins@henselphelps.com

FAWCETT ELEMENTARY SCHOOL

- Tacoma, Washington
- \$28M | 55,000 SF | Progressive Design-Build
- Demolition of existing and new construction of a facility to accommodate 400 students. Includes new parking lot, covered and paved play areas and an all-purpose field.
- TPS local and small business goals
 - Local Participation – 30%
 - Minority-owned Business Enterprises – 10%
 - Women-owned Business Enterprises – 6%
 - Small Business Enterprises – 5%
- Preconstruction/Purchasing
 - March 2021 to June 2022
- Construction
 - April 2022 to July 2023

DOWNTOWN REDMOND LINK



Ryan Piper
Operations Manager
rcpiper@henselphelps.com



Rod Noble
Senior Estimator
rnoble@henselphelps.com

DOWNTOWN REDMOND LINK

- Scopes of Work and Firms currently subcontracted to Hensel Phelps
 - Garage design-build Plumbing and HVAC – Hermanson Company LLP
 - Garage design-build Electrical – Sturgeon Electric Company, Inc.
- Scopes of Work and Firms currently in negotiation with Hensel Phelps
 - Garage Concrete work – The Conco Companies

DOWNTOWN REDMOND LINK

- Miscellaneous items
 - Construction Small Business Enterprise and Disadvantaged Business Enterprise Goals:
 - SE Station and Parking Garage
 - Small Business Enterprises 15%
 - Disadvantaged Business Enterprises 5%
 - Downtown Remond Station
 - Small Business Enterprises 20%
 - Disadvantaged Business Enterprises 5%
 - Project Labor Agreement (PLA)
 - Certified Payroll, State and Federal pre-determined wages
 - Buy America requirements

DOWNTOWN REDMOND LINK

Construction Schedule

- SE Garage
 - May 2021 through April 2023
- SE Redmond Station
 - August 2022 through May 2023
- Downtown Redmond Station
 - April 2022 through September 2023
- Separate bid items and potentially separate awards for the SE Garage, SE Redmond Station and Downtown Redmond Station

DOWNTOWN REDMOND LINK

- Purchasing – Bid Package 6 (Exterior Closures and Roofing)
 - Issued April 28, 2021 / Due May 21, 2021
 - Includes:
 - 1) Masonry
 - 2) Tension Mesh Systems
 - 3) Metal Panels
 - 4) Metal Roofing
 - 5) Flashing and Sheetmetal
 - 6) Membrane Roofing
 - 7) Expansion Joint Covers
 - 8) Louvers
 - 9) Glazed Wall Systems
 - 10) Glazed Canopies and Windscreens
 - 11) Exterior Vertical Decorative Louvers

DOWNTOWN REDMOND LINK

- Purchasing – Bid Package 7
 - Issued June 2021 / Due Late June 2021 to Early 2021
 - Includes:
 - 1) Structural and miscellaneous steel, decorative steel railings for the Stations
 - 2) Precast concrete stair treads
 - 3) Doors, Frames and Door Hardware
 - 4) Drywall partitions and ceilings
 - 5) Insulation
 - 6) Vapor and Moisture Barriers
 - 7) Fall Protection and Façade maintenance systems

DOWNTOWN REDMOND LINK

- Purchasing – Bid Packages 8 and 9
 - BP 8 Issued July 2021 (tentative) / BP 9 Issued August 2021 (tentative)
 - Includes:
 - 1) Millwork
 - 2) Epoxy Resin Flooring, Sealers, Traffic Coatings
 - 3) Acoustical Ceilings
 - 4) Metal ceilings
 - 5) Paint and Pavement Markings
 - 6) Water Repellant and Anti-graffiti coatings
 - 7) Resilient Flooring
 - 8) Tile
 - 9) Walk off Mats
 - 10) Joint Sealants
 - 11) Spray Applied Fireproofing and Intumescent Fireproofing
 - 12) Overhead coiling grilles and vertical lift doors
 - 13) Bird Deterrents
 - 14) Signage
 - 15) Toilet Accessories
 - 16) Fire Extinguishers and Cabinets
 - 17) Bike Racks and Bike Lockers
 - 18) Residential Appliances
 - 19) Site Furnishings
 - 20) Miscellaneous Specialties

PNW CRITICAL PATIENT CARE



Ryan Piper
Operations Manager
rcpiper@henselphelps.com



Jacob Erbes
Senior Estimator
jerbes@henselphelps.com



Dave Tompkins
Senior Estimator
dtompkins@henselphelps.com

PNW CRITICAL PATIENT CARE

Example Projects

- Kaiser Permanente Pharmacy Hardening
- Kaiser Permanente Infrastructure & Cable Engineering
- UWMC Clean Supply Room Renovation
- UW HSC MRI Replacement
- UWMC Surgery Pavilion Emergency Power Re-route
- UWMC NW285 CT Spect Replacement
- HMC 1EH Resus Rooms
- HMC 1W Clinic Radiology Spect Upgrade
- HMC Pharmacy Offices & Attending Locker

OWNERSHIP
INTEGRITY
BUILDER
DIVERSITY
COMMUNITY
OUR VALUES

PRECONSTRUCTION CONTACTS



Scott Bills
Director of Operations
sbills@henselphelps.com



Brad Rundquist
Chief Estimator
brundquist@henselphelps.com



Dave Hutt
Operations Manager
dhutt@henselphelps.com



Ryan Piper
Operations Manager
rcpiper@henselphelps.com



Henry Yates
Small Business Liaison



Rod Noble
Senior Estimator
rnoble@henselphelps.com



Jacob Erbes
Senior Estimator
jerbes@henselphelps.com



Dave Tompkins
Senior Estimator
dtompkins@henselphelps.com



Dana Napper
Lead Estimator
dnapper@henselphelps.com

Office: 425.646.2660 | 15375 SE 30th Place, Suite 110, Bellevue, WA 98007

